



Hopkins Row

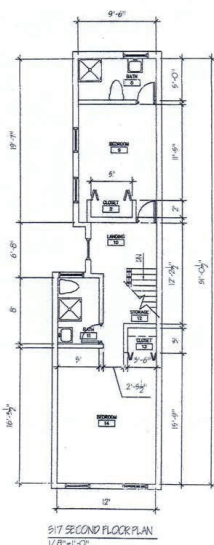
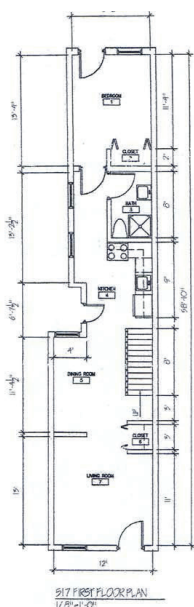
Hopkins Row presents furnished single rooms designed for students and staff. It is conveniently located one block from Johns Hopkins Medical School, Nursing School and Bloomberg's Public School of Medicine.

Created logo, web site, signage and brochure.
www.hopkinsview.com





HOPKINS VIEW



Sample Floor Plan

First Floor Bedroom 1

13'4" x 9'6" +Private Bath/Closet

First Floor Kitchen

First Floor Dining Room

First Floor Living Room

Second Floor Bedroom 2

11'5" x 9'6" +Private Bath/Closet

Second Floor Bedroom 3

15'9" x 12" +Private Bath/Closet

Contact Collin Porter to check availability or to arrange a tour at 410.366.7018 | info@crallc.us. Visit us at Johns Hopkins Medicine off campus housing at Offcampushousing.hopkinsmedicine.org or take a virtual tour at www.HopkinsView.com.

Bringing Students & Staff Together with Johns Hopkins!



No need to fight over finding a city side street parking spot when your personal spot is right at your back door!

We have 8 town-homes completely renovated. Each has three bedrooms with attached full bath, study area, closet, common kitchen and living room area.





WALKING DISTANCE TO THE HOSPITAL

WWW.HOPKINSVIEW.COM



AFFORDABLE FURNISHED SINGLE ROOM STUDENT HOUSING

Amenities Included...

Multiple Properties:
515, 517, 520, 527, 528, 529, 530, 532
Walking Distance
Furnished Single Rooms/Some with Deck
Shared Kitchen and Living Room
Private Bathrooms
Cable and Internet Ready
Telephone and WiFi Ready

Washer and Dryer (shared)
Storage
Stainless Steel Appliances & Granite Counter Top
Central Air
24 Hour Security
Ceiling Fans
Hardwood Floors
Utilities and Parking Included
*Check Out HopkinsView.com For More Info

Contact Collin Porter

Leasing Specialist
410.366.7018
info@crallc.us | www.crallc.us

Convenient...

Walking distance to the hospital, nursing school, Bloomberg Public Health, located in 500 block of North Castle Street between McElderry Street and Jefferson Street.

Rates...

\$650-\$850 per month
Utilities and Parking Included
Application Fee: \$35
Security Deposit: One Month's Rent



AFFORDABLE FURNISHED SINGLE STUDENT HOUSING AT HOPKINS VIEW



FURNISHED SINGLE ROOMS \$650* TO \$800* (INCLUDING UTILITIES) PER ROOM

Walking distance to the hospital, nursing school, Bloomberg Public Health, located in 500 block of North Castle Street between McElderry and Jefferson.

We have 8 town-homes completely renovated with modern facilities and eight parking spaces. Each town home has three bedrooms with attached full bath rooms, study area and closet. Common kitchen and living room area.

ADDITIONAL AMENITIES: Cable and Internet Ready, Telephone and WIFI Ready, Washer & Dryer (shared), Stainless Steel Appliances and Granite Counter Top, Storage, 24 Hour Security, 24 Hour Maintenance, Central Air, Hardwood Floors, Ceiling Fans, Some with Deck
*Rate subject to change. Supply is limited.



WE SPECIALIZE IN BRINGING STUDENTS AND STAFF TOGETHER WITH JOHNS HOPKINS!

Contact Collin Porter today to check availability, to arrange a tour and mention this ad to get \$100 off first month's rent.

CRA Management, LLC | Baltimore, MD | T 410.366.7018 | F 410.366.8636 | info@crallc.us

Or visit us at Johns Hopkins Medicine off campus housing at Offcampushousing.hopkinsmedicine.org | www.hopkinsview.com

32350 Cea Dag Circle • Unit 205 • Dagsboro • DE • 19939 • 410-828-7990 office • 302-927-0232 fax
www.midnightdesign.net • www.midnightpromos.net • midnightdesign.holidaycardwebsite.com

